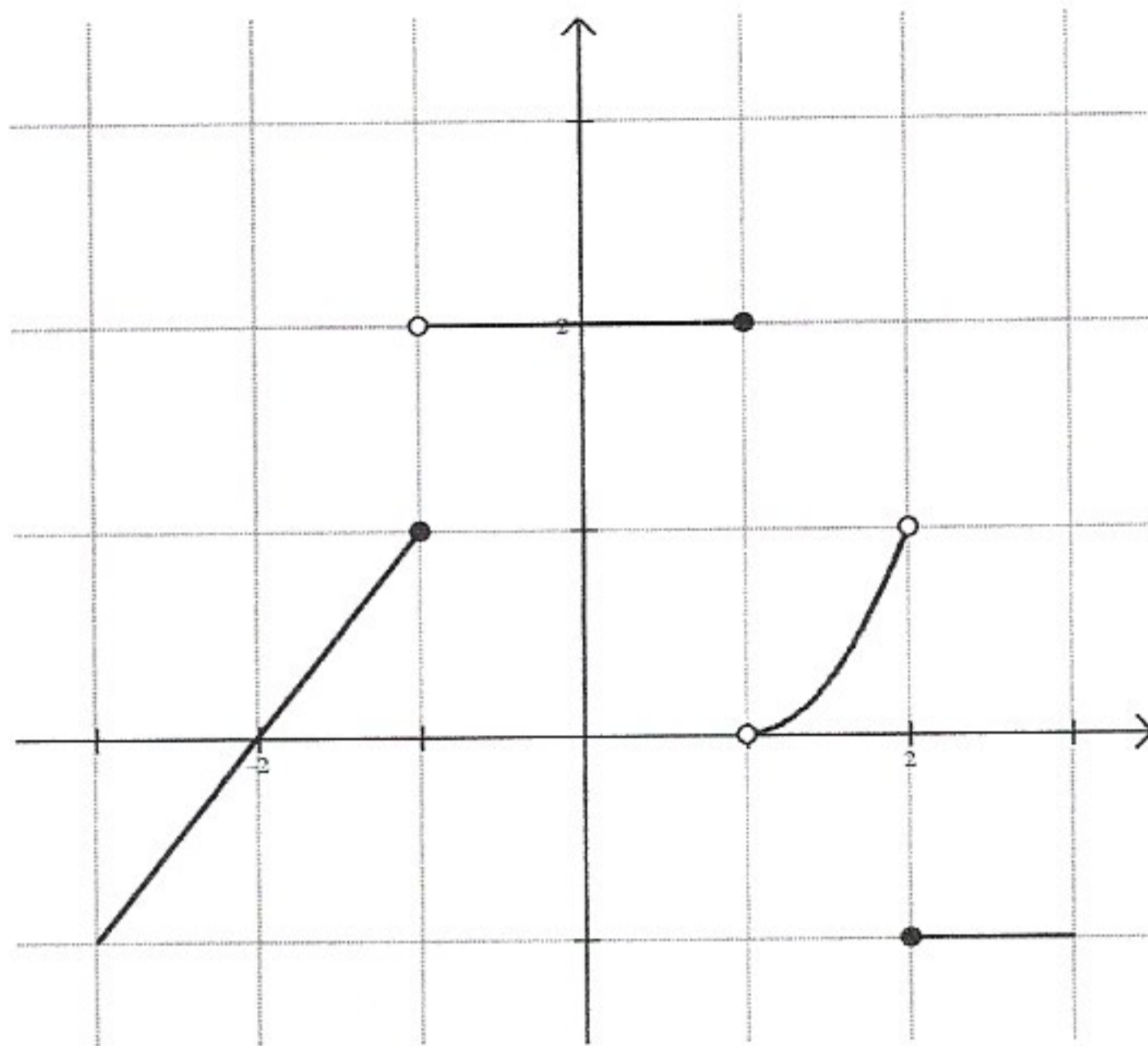
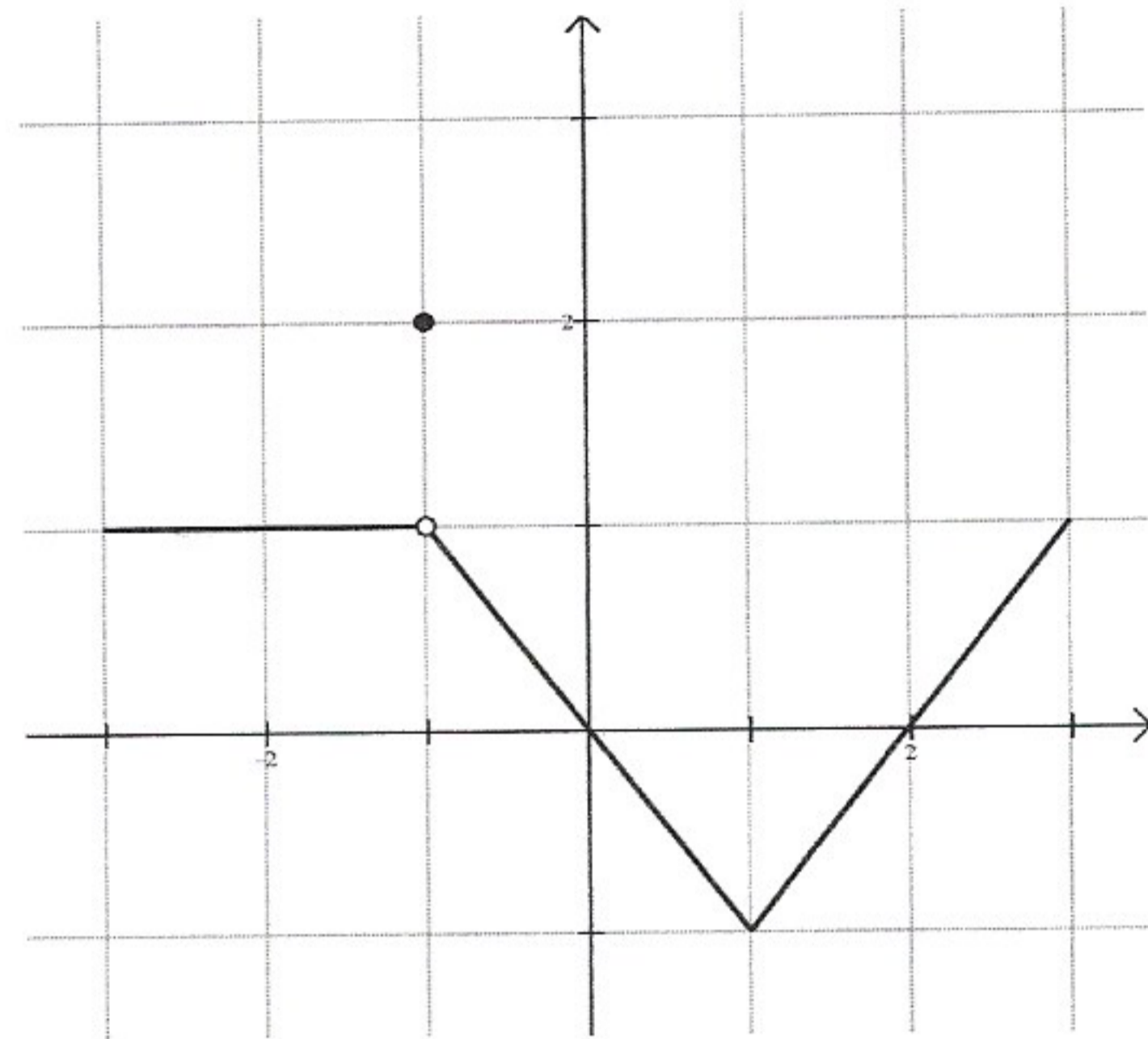


Limits Graphically

The graphs of the functions f and g are given below.



graph of f



graph of g

Determine whether the following limits exist. If they do, then find the limit.

1. $\lim_{x \rightarrow -1} f(x)$
2. $\lim_{x \rightarrow 1} f(x)$
3. $\lim_{x \rightarrow -1} g(x)$
4. $\lim_{x \rightarrow 1} g(x)$
5. $\lim_{x \rightarrow -1} [f(x) + g(x)]$
6. $\lim_{x \rightarrow 0} [2f(x) + 3g(x)]$
7. $\lim_{x \rightarrow -1} [f(x)g(x)]$
8. $\lim_{x \rightarrow 2} [f(x)g(x)]$
9. $\lim_{x \rightarrow 0} \frac{f(x)}{g(x)}$
10. $\lim_{x \rightarrow 0} \frac{g(x)}{f(x)}$
11. $\lim_{x \rightarrow 2} g(f(x))$
12. $\lim_{x \rightarrow -1} f(g(x))$